

NOTE:
 CROSS HATCHED AREAS INDICATE THE MAXIMUM PERIMETER WHERE SIGNAGE MAY
 BE INSTALLED FOR EACH INDIVIDUAL RETAIL SPACE. ACTUAL ALLOWABLE SIGN
 SQUARE FOOTAGE IS CALCULATED FOR EACH RETAIL SPACE AND IS AVAILABLE
 ALONG WITH SCALED ELEVATIONS OF EACH STORE FRONT, FROM MAITLAND CITY
 CENTRE.

MAITLAND
 CITY
 CENTRE

ENVIROGRAPHICS, LLC
 3400 Wilder Ln., Orlando, FL 32804
 Tel 407 491-7903
 KaterEnviroGraphics@gmail.com

COPYRIGHT NOTICE

The document contains copyright
 material prepared or published, in whole or in part, by EnviroGraphics, LLC.
 Any reproduction or distribution of
 this document, in whole or in part,
 without the prior written consent of
 EnviroGraphics, LLC, is prohibited.

MAITLAND
 CITY CENTRE
 SIGNAGE SET



1 EXTERIOR ELEVATION @ INDEPENDENCE LANE
 SD5.01 SCALE: 1" = 20'-0"



2 EXTERIOR ELEVATION @ PACKWOOD
 SD5.01 SCALE: 1" = 20'-0"

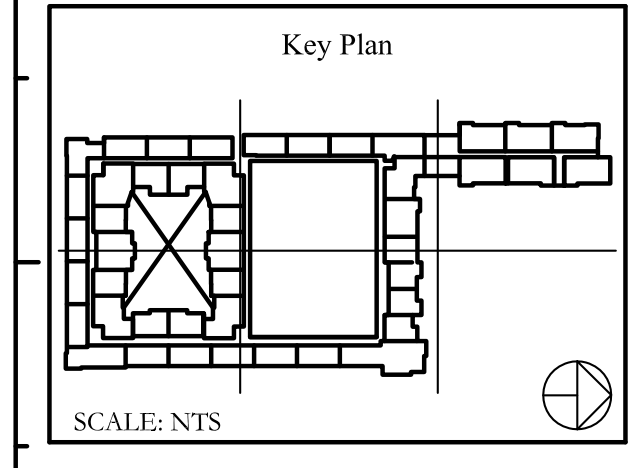


3 INSIDE PARKING LOT - NORTH FACE
 SD5.01 SCALE: 1" = 20'-0"



4 EXTERIOR ELEVATION @ 17-92 ORLANDO AVE.
 SD5.01 SCALE: 1" = 20'-0"

| Issues | | | | |
|--------|------|----------------|----|--|
| No. | Date | Issue/Revision | By | |
| | | | | |
| | | | | |



Date: July 30, 2019
 Checked By: BK / CS
 Drawn By: CS
 Project No.: 1401

Phase: PERMIT
 Sheet Name:
**EXTERIOR
 ELEVATIONS**

SHEET NUMBER
SD5.01

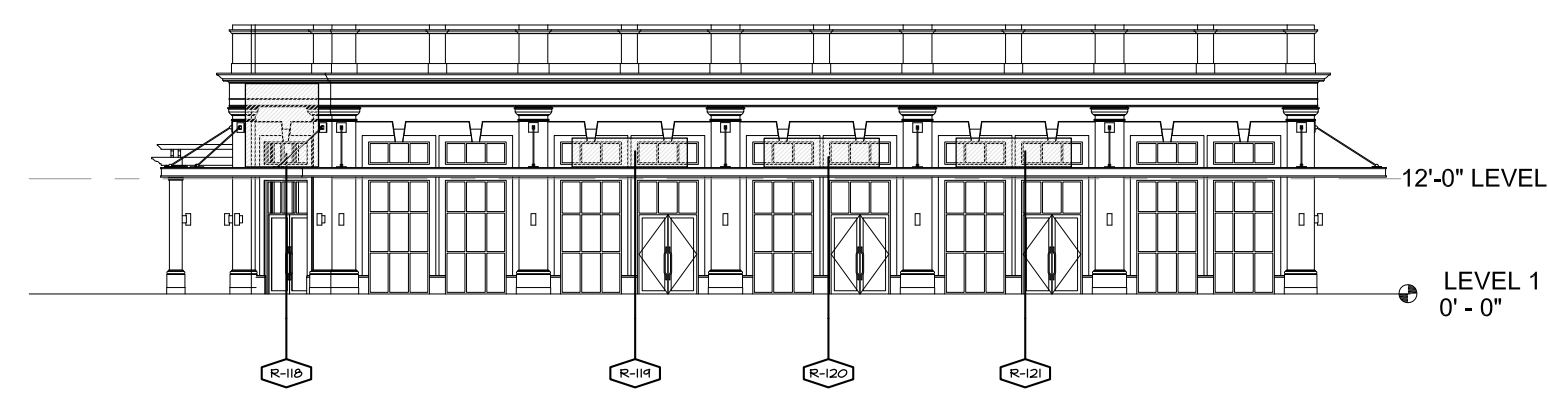
MAITLAND CITY CENTRE

ENVIROGRAPHICS, LLC
 3600 Wilder Ln., Orlando, FL 32804
 Tel 407 491-7903
 KaiserEnviroGraphics@gmail.com

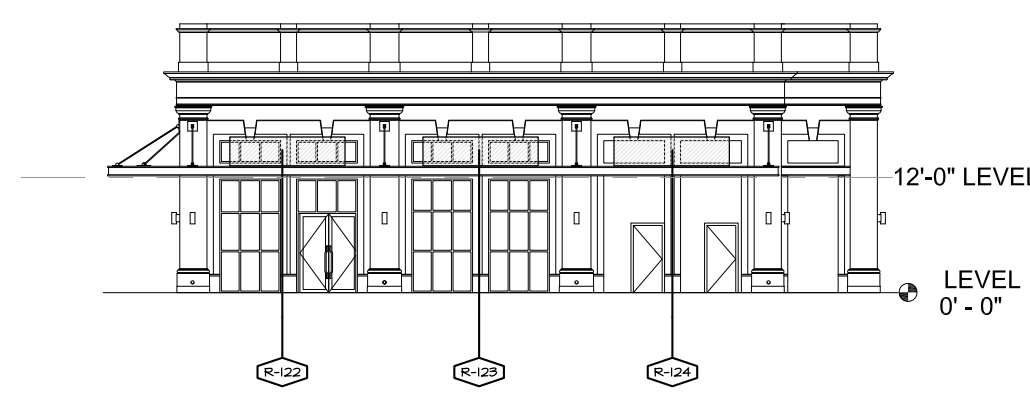
COPYRIGHT NOTICE

The document contains copyrighted material information belonging to the copyright holder and is for the sole use of the recipient. Any unauthorized use, reproduction, distribution, or disclosure of any of the information contained herein may result in liability under applicable laws.

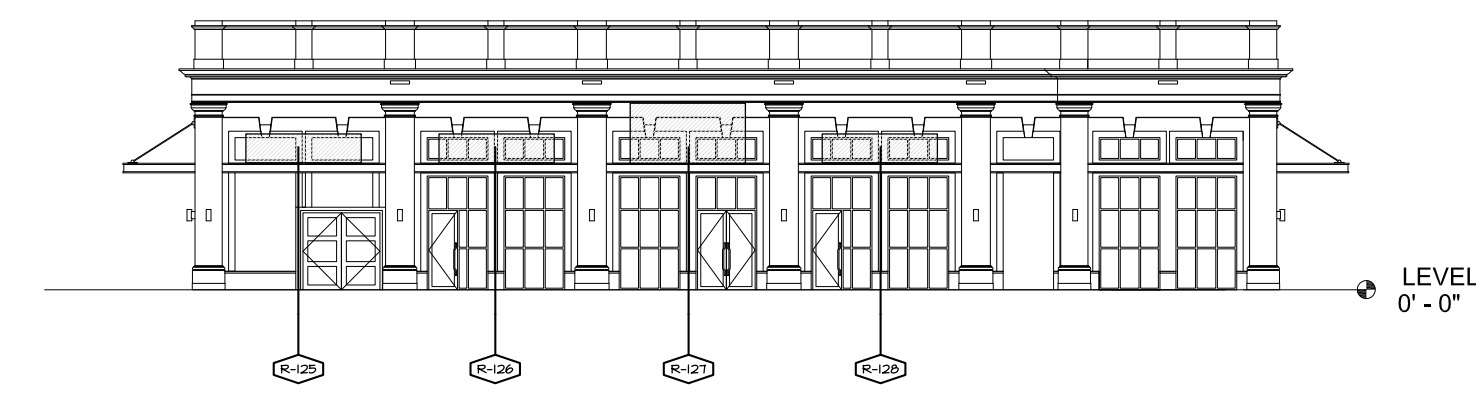
MAITLAND CITY CENTRE SIGNAGE SET



1 RETAIL "E" EXTERIOR ELEVATION @ HORATIO AVE.
 SD5.02 SCALE: 1" = 20'-0"



2 INSIDE PARKING LOT RETAIL "E" WEST FACE
 SD5.02 SCALE: 1" = 20'-0"



3 INSIDE PARKING LOT RETAIL "E" SOUTH FACE
 SD5.02 SCALE: 1" = 20'-0"



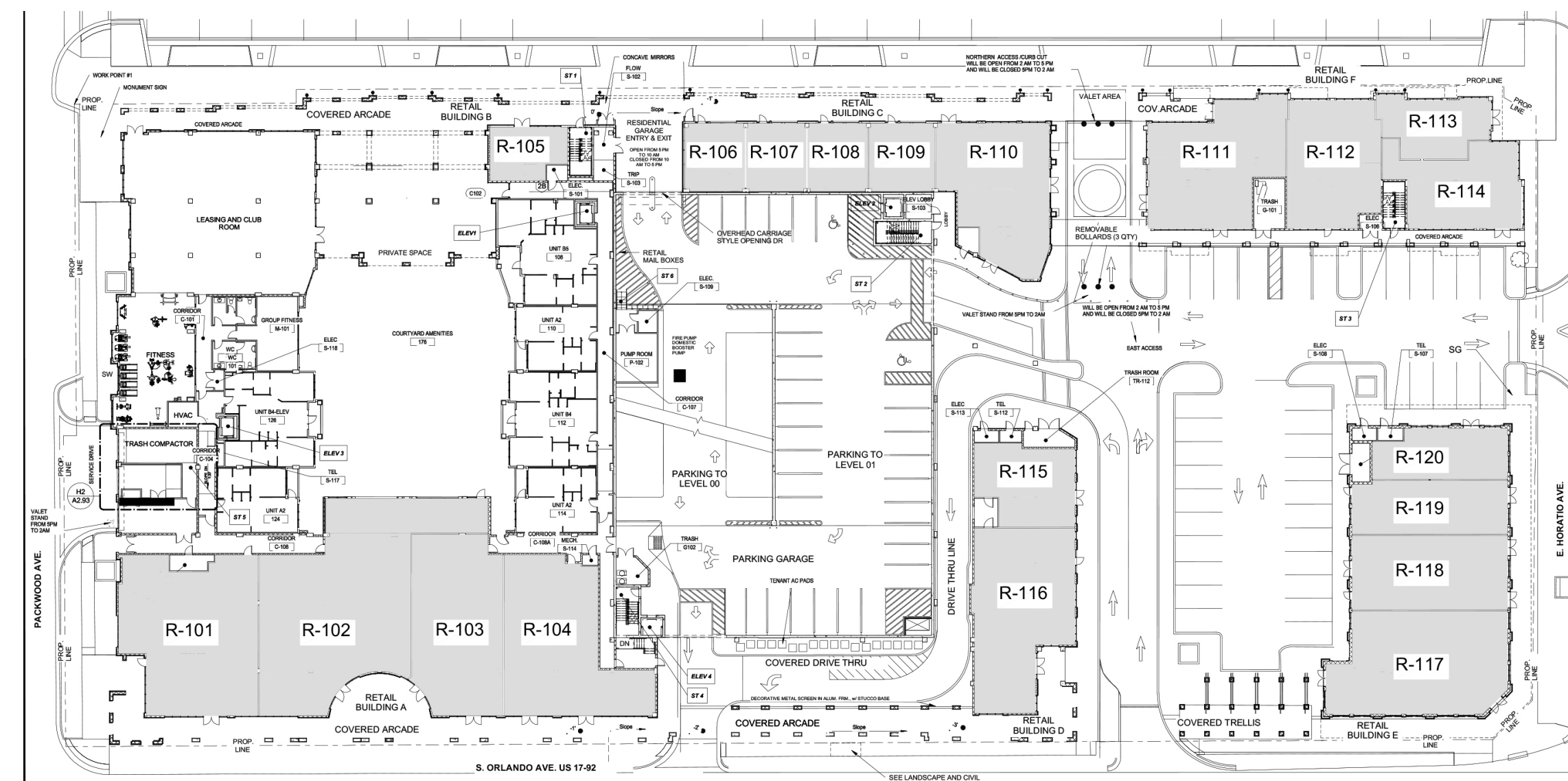
4 EXTERIOR ELEVATION @ HORATIO AVE.
 SD5.02 SCALE: 1" = 20'-0"

NOTE:
 CROSS HATCHED AREAS INDICATE THE MAXIMUM PERIMETER WHERE SIGNAGE MAY BE INSTALLED FOR EACH INDIVIDUAL RETAIL SPACE. ACTUAL ALLOWABLE SIGN SQUARE FOOTAGE IS CALCULATED FOR EACH RETAIL SPACE AND IS AVAILABLE, ALONG WITH SCALED ELEVATIONS OF EACH STORE FRONT, FROM MAITLAND CITY CENTRE.

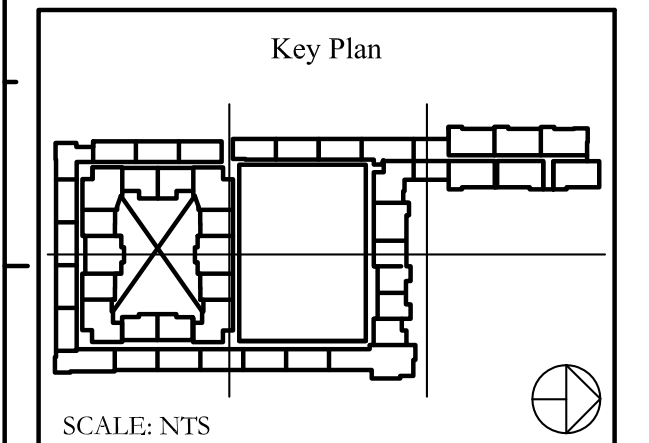


5 EAST EXTERIOR ELEVATION @ PARKING AREA
 SD5.02 SCALE: 1" = 20'-0"

NOTE:
 CROSS HATCHED AREAS INDICATE THE MAXIMUM PERIMETER WHERE SIGNAGE MAY BE INSTALLED FOR EACH INDIVIDUAL RETAIL SPACE. ACTUAL ALLOWABLE SIGN SQUARE FOOTAGE IS CALCULATED FOR EACH RETAIL SPACE AND IS AVAILABLE, ALONG WITH SCALED ELEVATIONS OF EACH STORE FRONT, FROM MAITLAND CITY CENTRE.



| Issues | | | |
|--------|------|-------|----------|
| No. | Date | Issue | Revision |
| | | | |
| | | | |



Date: July 30, 2019
 Checked By: BK / CS
 Drawn By: CS
 Project No.: 1401

Phase: PERMIT
 Sheet Name: EXTERIOR ELEVATIONS
 SHEET NUMBER
SD5.02

MAITLAND CITY CENTRE

ENVIROGRAPHICS, LLC
 3600 Wilder Ln., Orlando, FL 32804
 Tel 407-491-7903
 KaiserEnviroGraphics@gmail.com

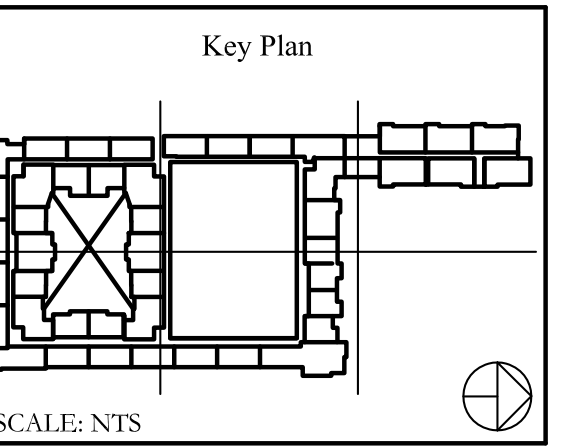
COPYRIGHT NOTICE

This document contains copyrighted material information and is not to be reproduced, stored in a retrieval system, or transmitted in any form or by any means, electronic, mechanical, photocopying, recording, or by any information storage and retrieval system, without the prior written permission of the copyright owner.

MAITLAND CITY CENTRE SIGNAGE SET

| Issues | | | |
|--------|------|----------------|----|
| No. | Date | Issue/Revision | By |
| | | | |
| | | | |
| | | | |

| Revisions | | | |
|-----------|------|----------------|----|
| No. | Date | Issue/Revision | By |
| | | | |
| | | | |
| | | | |



Date: July 30, 2019
 Checked By: BK / CS
 Drawn By: CS
 Project No.: 1401

Phase: PERMIT
 Sheet Name: VEHICULAR WAYFINDING SIGNS
 SHEET NUMBER

SD5.04



24" Diameter (P)



DOUBLE SIDED NON ILLUMINATED SIGN MOUNTED ON EXISTING LIGHT POLE



24" Diameter (P)



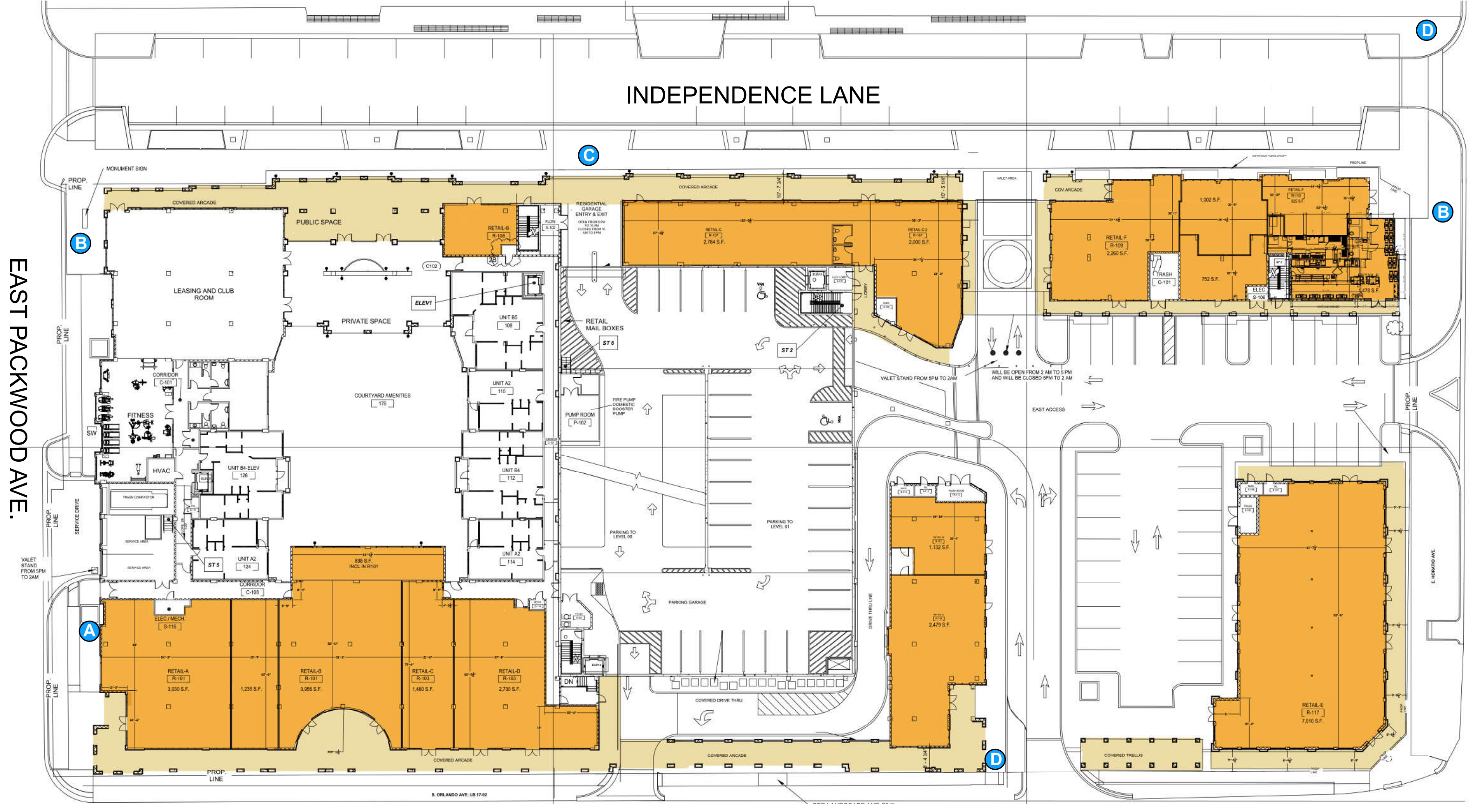
SINGLE SIDED NON ILLUMINATED POLE SIGN



12'0"



INTERIOR ILLUMINATED WALL SIGN 16'0"



DOUBLE SIDED NON ILLUMINATED SIGN MOUNTED ON EXISTING LIGHT POLE

24" Diameter (P)



SINGLE SIDED INTERIOR ILLUMINATED POLE SIGN

36" Diameter (P)



12'0"



(A)

(C)

(B)

EAST HORATIO AVE.

ORLANDO AVE.

EAST PACKWOOD AVE.

(C)

(B)

(A)

(D)

(D)